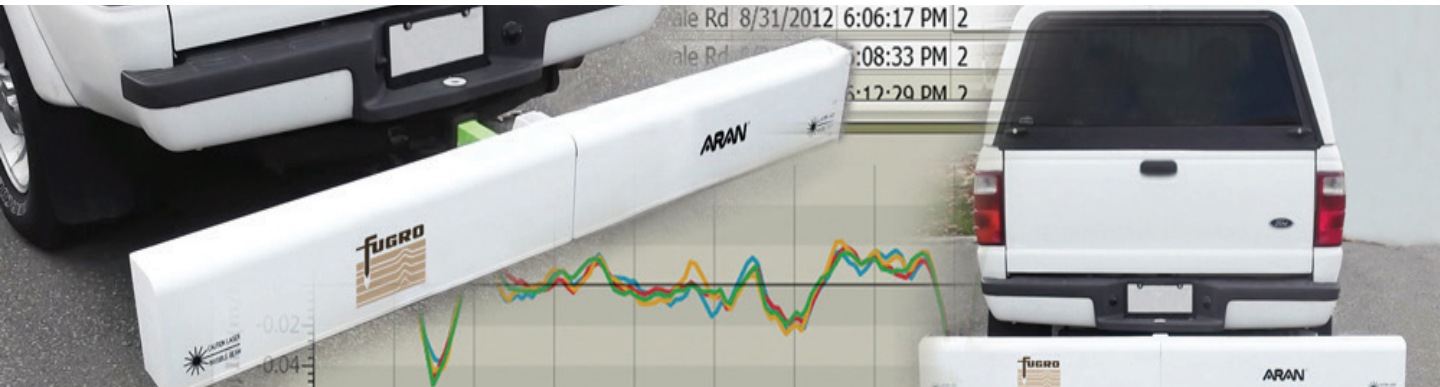


# ARAN 7000



The ARAN 7000 is the only portable, light-weight, hitch mount profiler that can accommodate up to nine sensors (point or line) for roughness, smoothness, texture and rutting. If your pavement analysis goals change, the ARAN 7000 can be easily reconfigured to meet those goals. This high speed profiler, with stop-start-slow intelligent algorithms and portable flight case, enables you to collect accurate data at any speed, anywhere.

**Portable:** The most flexible profiler on the market. The easy to assemble profiler comes with a quick set-up and a flight-ready case. It has the ability to distribute sensors evenly across the profiler width and a hitch-mount makes this is a go-anywhere rugged road profiler.

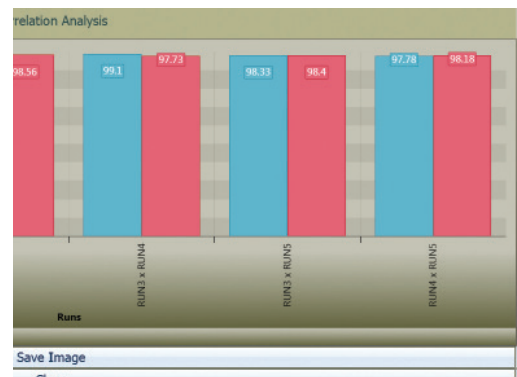
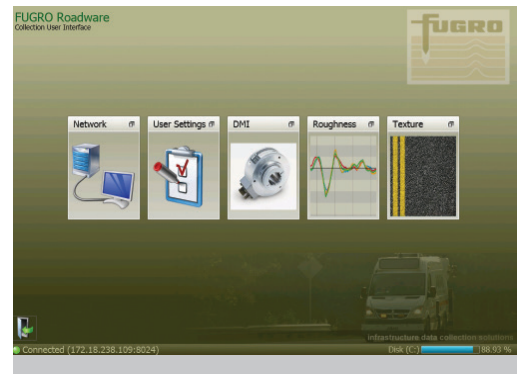
**Data:** Longitudinal profiles, ride number (RN), IRI, texture, and rutting can all be collected depending on sensor configuration.

**LoadedChainage:** Loaded chainage allows the operator to collect data starting at non-zero stationing and collect negative direction data.

**Stop-Start-Slow:** The ARAN 7000's intelligent speed-sensitive algorithms improve the accuracy of the longitudinal profile calculated during low speed and start-stop zones.

**Training:** The intuitive and user-friendly graphic user interface (GUI) makes the profiler easy to operate and helps keep training costs to a minimum.

**Integrate:** The ARAN 7000 can be equipped with video, DGPS and up to nine laser sensors for roughness, rutting or texture measurements.





# ARAN 7000

## Features

### Hardware

- Supports up to 9 interchangeable lasers (64Khz, 16Khz, 3Khz)
- Selcom point lasers (16KHz/64KHz)
- Roline 3KHz 4" (100mm) line laser
- DMI (quadrature encoder signal – universal mount)
- Auto-start proximity sensor
- Portable flight case
- Light weight and high strength
- Universal 2" hitch mountable (Class 1, 2 and 3)
- GPS
- Synchronized data control system
- Laser safety interlocks (meets OSHA standards)
- NEMA 4/4X (IP 65 enclosures)
- Fully waterproof
- 12V power supply (powered by electrical system of towing vehicle)
- TCP/IP command structure
- Warning lights
- Toughbook laptop

### Software

- Touchscreen operator interface capabilities
- Simple step-by-step calibration
- Route planning
- System diagnostics
- Real-time display of data (including Longitudinal Profile, IRI and RN in real-time, for either single or dual wheel paths)
- User-defined reporting interval selectable to 1" (25.4 mm)+
- Ability to save raw roughness and texture data
- Thresholds
- Real-time reporting
- Exporting
- Data comparison

## Specifications

- Windows XP, Windows 7 or 8 including tablet PCs for touchscreen functionality
- Data can be reported using construction stations
- Roughness data can be exported to a variety of formats (ERD, CSV, TXT)
- Offers a pass-through quadrature encoder signal (TTL) to facilitate integration and synchronization with the system
- Additional computers can be used as a backup for system, including those in the existing system
- Post analysis software is capable of calculating the correlation between runs
- Easy transfer of software license from one computer to another - no need for recalibration or shipment of any component

### ARAN 7000 CONFORMS TO:

AASHTO PP 38-00	AASHTO MP 11
AASHTO PP 49-03	ASTM E1703/E1703M
AASHTO PP 50-03	TTI Certified
ASTM E950-94	

### WEIGHT & LENGTH

- Weight: approx. 89 lbs (36 kg) - including two sensors with control box
- Length: 78" (2 m)

## Support and Maintenance

Fugro is committed to ensuring that you get the support you need in order to utilize your ARAN 7000 to its full potential.

### Features of Our Support Program Include:

- Phone support (Mon to Fri, 6:00a.m.-6:00p.m. EST)
- Onsite technical support and training
- 24 hour online customer support web portal

### WARRANTY:

Full one year parts warranty, extended warranty available

## Fugro Roadware

North America Toll Free: +1-800-828-ARAN (2726)

Phone: +1-905-567-2870

roadware@fugro.com