



FUGRO

M.V. FUGRO DISCOVERY

This vessel, which was purpose built for the Norwegian Navy, has undergone a conversion to provide multi-role survey capabilities. The vessel has permanently mobilised geophysical and hydrographical survey spreads, ready for rapid deployment to survey locations worldwide.

M.V. Fugro Discovery, built in 1997 and subsequently maintained to the high standards demanded by the navy, provides Clients with a reliable and well appointed survey vessel with multi-role capability, ROV inspection, pipeline and cable route surveys, high resolution seismic acquisition surveys, geotechnical and environmental surveys.

The vessel is fitted with an auto positioning system, a full suite of modern survey equipment and a comprehensive suite of deck equipment which includes a 16 tons A frame.

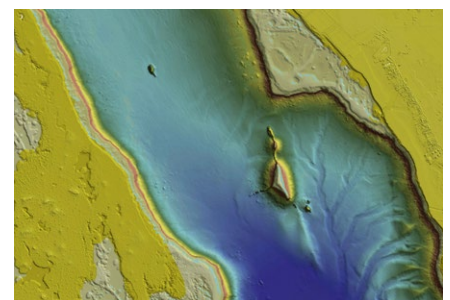
The design of the vessel permits all kinds of simultaneous geophysical survey operations as well as geotechnical and environmental investigations.

At 70 m LOA and accommodation for 24 en suite single and double cabins the M.V. Fugro Discovery is a comfortable and spacious vessel to work on.

Hydrographic offices and Clients within the power- and communication cable industry will be able to utilise the M.V. Fugro Discovery to obtain high resolution data for permitting, planning, design activities and engineering.



M.V. Fugro Discovery.



Bathymetry of Underwater Seamount.

M.V. FUGRO DISCOVERY

Technical specifications

General

Name	M.V. Fugro Discovery
Classification	DNV, 1A1 ICE-1B E0
Owner	Fugro
Built	Naval Shipyard, Gdynia, 1997
Port / Flag	Panama
MMSI No.	372698000
Call Sign	3EKE6
IMO No.	9152882

Dimensions

LOA	70.0 m
Beam	12.6 m
Draught	6.0 m
Tonnage	2018 gross

Accommodation

Cabins	12 single en-suite 11 double en-suite
Hospital	1 single berth
Offices	1 clients office
Recreation	2 x lounge / video 1 x gym

Machinery

Propulsion	MaK M32 2640kW Finnoy 3.75 : 1 gearbox
Bow Thruster	Elliott White Gill 470KW
Rudder	Single Finnoy
Cruising Speed	10 knots
Maximum Speed	13 knots

Electrical Power

Shaft Generator	990 kW
Main Generator	690 kW
Emergency Generator	513 kW

Capacities

Fuel Capacity	460 m ³
Fuel Consumption	6m ³ per day
Water Capacity	300 m ³ fresh water
Water Consumption	7m ³ per day

Control and Navigation

Autopilot	Robertson AP9 Mk3
Dynamic Positioning	Kongsberg K-POS
Radars	VisionMaster FT X/S-band (x2)
Gyrocompass	Robertson RGC-11 TSS Meridian
Satellite Positioning DGPS	Starfix Starpack x 3
Acoustic Positioning System	Kongsberg HiPAP 500
Vertical Reference Unit	Kongsberg & Seapath330+ incl. MRU 5+
On/Offline Systems	Qincy / Starfix NG / Caris & various Geophysical SW
Nav echosounder	Furuno FE 680
Speedlog	Ben Marine

Deck Machinery

Deck Crane	1 x GMC 3.0 t / 12 m
A Frame	20 t (SWL)
Winches	20 t CPT Winch & Various Survey Winches
Viscovo Marine Crane	12 m x 1 t, 4m x 3 t

Communications

MF / HF	JRC JSS-2150 NTD-2150
VHF	2 x Sailor RT 2047 & 2 x Sailor RT 2048
Satellite	Iridium
Inmarsat C	Thrane&Thrane TT3020
VSAT/KU Band	MARLINK / Sealink / Sea Tel (2 x sets)
Epirb	Jotron Tron 40S
VHF Handheld Radios	Motorola GPO 340
Navtex	Furuno NX-500

Safety

Rescue / MOB Boat	Noreq FRB650 13 pers
Life Rafts	2 x 35 pers & 2 x 20 pers
Man Overboard Liferaft	1 x Jon Buoy fitted to Stern
Survival Suits (100%)	Harvey Survival Suits
Life jackets (200%)	Seamaster Life jackets
Breathing Devices	4 x Breathing Apparatus Stations
Emergency Radios / Beacons	2 x Jotron SART 1 x Jotron 30S MkII

Survey Equipment

Echo Sounder	Kongsberg EA400
Multibeam Echo Sounder I	Kongsberg EM 712 0.5° x 0.5° 40 kHz to 98 kHz
Multibeam Echo Sounder II	Kongsberg EM 122 1.0° x 2.0° 12 kHz
Sound Velocity Probe	2 x Valeport
Side Scan Sonar	Edgetech 4200
Sub Bottom Profiler	Hull Mounted Pinger (4 x 4 Array)
Magnetometer	Geometrics G-882 Magnetometer
Mini Air Gun Energy Source	10 cu inch sleeve gun
Firing Control	MUCAS
Hydrophone	Benthos24 Element Mini-Streamer
Streamer Control	Digiscan / Digicourse
Logging / Digital Processing	GLOG / GPLOT
Seismic Recording System	NTRS 2 Recording System
Multi Channel Streamer	Seamux gel filled digital streamer
High Resolution Seismic Source	6 x I/O Sleeve Guns (2 x 10, 2 x 20, 2 x 40)
Compressors	4 x Hamworthy
Geotechnical Capability	CPT's and Vibrocores
Environmental Capability	Day / Van Veen Grabs, Stills & Video Camera. Deep Water Video Grab
Seabed Sampling	Box Corers - several options can be mobilised Gravity Corer / Piston Corer
ROV Capability	Several options can be mobilised