

Surveyor



GPS and linear position of road-side assets can be easily, accurately, and safely determined from geo-referenced digital images. Standard and custom assets are easily selected from your text/graphical asset catalog, minimizing data entry time and ensuring accurate information. Surveyor also allows for the marking of other user-defined attributes, at a fraction of the per asset cost of similar inventories created by on-foot personnel.

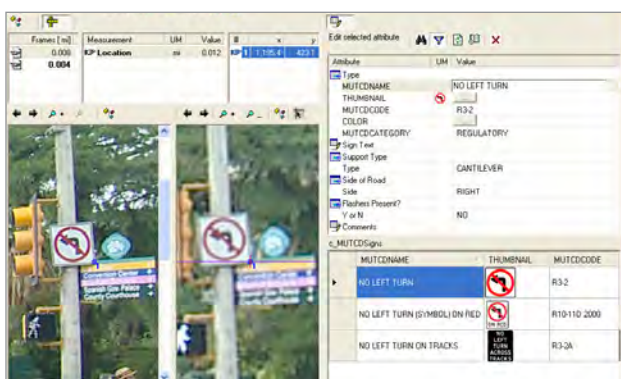
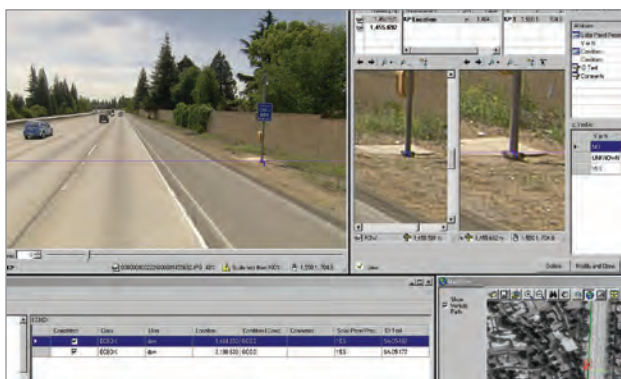
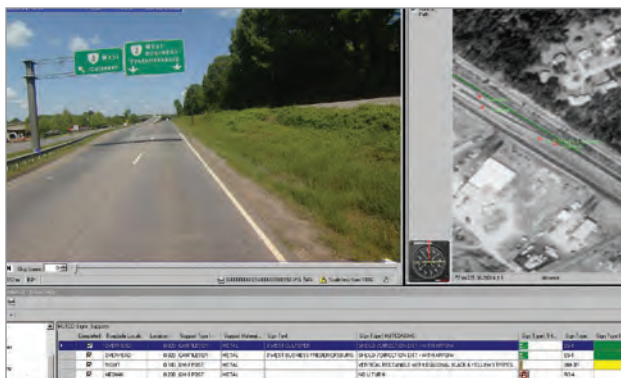
Locate: Fugro's Surveyor asset extraction application displays, measures, and inventories roadside assets located along the right-of-way (ROW). Using digital video obtained from a true HD video camera, Surveyor can locate roadside assets through the use of our proprietary technology which utilizes calibrated images and highly precise position information.

Fast: Roadside assets can be processed quickly, accurately, and repeatedly, enabling you to easily conduct network level asset inventories. After the HD images have been collected, they are imported into Surveyor for processing. From there they can be exported to any GIS for import into your Asset Management System (AMS).

Precision: The asset inventory application that is easy to use while still delivering accurate and repeatable results. By processing roadside assets from HD ROW images, you can leave behind the practice of manual surveying.

Share: Making the collected data available in common formats allows for greater collaboration within your organization.

Images: We take image quality serious and use the highest quality broadcast video cameras with true high definition (1080p) 1920 x 1080 from three CCD cameras. High quality optics ensure greater detail and our cameras are calibrated to give "cm" accuracy at the furthest distances.





Surveyor

Control: For both ARAN and Surveyor customers alike, Surveyor gives the control you need to extract detailed information about roadway assets when you need them.

Outsource: Processing large data sets can be a time consuming and expensive task. We have an experienced team who can handle your processing needs and deliver the highest quality in the tightest deadlines.

GASB 34: According to GASB 34, state and local governments will be required to report all financial transactions, including the value of their infrastructure assets. Although a mandatory requirement, the return on investment from such a program cannot be ignored. Whether your strategy is to do more with less money or to gain approval for additional funding, a full and accurate asset inventory is a necessary first step.

Save: With Surveyor you eliminate the need for manual roadside surveying. It provides you with information for all roadside assets, which serves as the foundation for your savings. Additionally, everything from vehicle costs to man hours are cut back drastically for such surveys.

Specifications

Server:

- Windows Server 2000 Professional with SP4 or later
- 4 GB of RAM
- 10 GB available hard drive space
- Pentium 4 (minimum)

Client:

- .NET Framework 3.5
- Microsoft Windows XP or 7
- Dual-core processor min. (quad-core recommended)
- 3 GB RAM minimum (6 GB recommended)
- Dual monitor configuration
- 50 MB hard disk space

Features

- Spell check
- Data dictionary management
- Manage multiple databases
- Database connection wizard
- Hot swap to a new database
- Image zoom window
- Quality threshold tools
- Video playback tools
- Support for Microsoft Access SQL
- LRS and user-defined assets
- Bookmarks
- View assets by user
- Measure width, height, length, and off-set
- Display units and dimensions; metric or imperials
- Check in, check out files and sections
- Pop up asset browser
- Asset editor
- Create point and linear assets with GPS
- Snapshot of asset
- User management security
- Tabular view
- Multi-image viewer

Support and Maintenance

Fugro is committed to ensuring that you get the support you need in order to utilize Surveyor to its full potential.

Features of our support program include:

- Phone support (Mon to Fri, 6:00a.m.-6:00p.m. EST)
- Onsite technical support and training
- 24 hour online customer support web portal

Premier Services Group (PSG):

PSG provides services to enhance the project-specific knowledge of key clients and to help them innovate, including:

- Installation and support services
- Managing plug-in development
- Writing productivity scripts and high-end work flows
- Optimizing hardware
- Customized training and documentation

Fugro Roadware

North America Toll Free: +1-800-828-ARAN (2726)

Phone: +1-905-567-2870

roadware@fugro.com