

Sediment Laboratories



Providing analytical facilities for marine and freshwater sediments, effluents, filter bed media, sludge bio-products and sediment tracer studies.

Analytical Services

Fugro EMU Limited offers modern, extensively equipped UKAS¹ accredited sediment laboratories, from which highly accurate, reliable results are obtained using the latest analytical equipment and techniques.

Fugro EMU's sediment laboratories are specialists in particle size distribution analysis and accredited by UKAS¹ to the ISO 17025: 2005 standard. Our Laboratories participates and consistently demonstrates good performance in the FAPAS LEAP and NMBAQC inter-laboratory proficiency schemes. We are confident that our analysis services are of the highest quality to meet your requirements. Our laboratory works closely with Fugro EMU survey and consultancy groups to provide a comprehensive in-house sample collection, analysis and consultancy service. Our analytical range includes:



Particle size analysis

Characterisation Testing

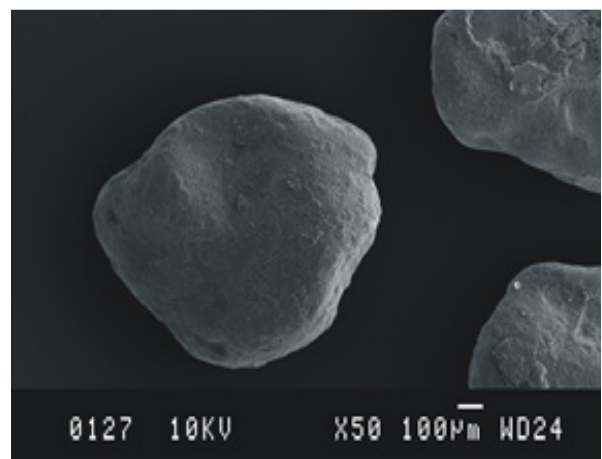
- Particle size analysis via wet and dry sieving (BS 1377 and NMBAQC methods)¹
- Particle size analysis via laser diffraction (BS ISO 13320 and NMBAQC methods)¹
- Total suspended sediment¹
- Sodium sulfate soundness testing of biological filter bed media (BS1438: 2004)
- Biological filter bed / media surveys
- Vibrocore logging and photography (BS 5930: 1999)

Chemical Testing

- PCBs, PAHs and TPHs¹
- Metals and organotins
- Total organic matter / loss on ignition
- Carbonate content and total organic carbon

Specialist Services

- Fluorescent tracers – manufacture and enumeration of sediment tracers



SEM image of sediment tracer



One of Fugro EMU's sediment laboratories

Sediment Laboratories

Applications

Fugro EMU offers a full range of sediment testing capabilities to meet the requirements of a range of industry sectors including oil and gas, marine renewables, ports and harbours, mineral and aggregates as well as Government agencies.

Grab, core and water samples are processed by our in-house group of multidisciplinary staff with extensive analytical experience in conducting the full range of sediment testing services we offer. Data is routinely used to support baseline ecological studies, environmental impact assessment, marine planning applications and licence / consent monitoring.

The Benefits

The laboratories work closely with Fugro EMU's survey groups to provide a comprehensive service for clients from project inception to final reporting where required. Our multidisciplinary analytical group has extensive experience in a wide range of sediment analysis techniques in addition to processing high volume / short timescale projects.

Analytical requirements can be tailored to suit specific technical needs. Provision of an all-round high quality analytical service; backed by a fully documented quality management system.

Staff Experience

Fugro EMU's specialist analytical group has the experience and capacity to cope with large contracts, short time frames and project specific technical requirements. Our team has worked on a wide range of analysis contracts within the UK from areas such as the eastern English Channel, North Sea, south west Wales and Northern Ireland. International project experience includes the Mediterranean, east coast of Africa and the Persian Gulf (Saudi Arabia, Kuwait, Bahrain, Oman and Iran).

Analytical requirements can be tailored to suit specific technical needs. Provision of an all-round high quality analytical service; backed by a fully documented quality management system.



Quality Assurance

Underpinning all aspects of Fugro EMU's operations is an ongoing commitment to quality encompassing both UKAS¹ and BSI standards of practice. Fugro EMU's ISO 17025:2005 (UKAS) and ISO 9001:2008 (BSI) accreditations ensure the highest level of quality is achieved and maintained throughout all levels of service delivery. All of our in-house methods are documented and subject to internal and external audits forming part of the wider Fugro EMU quality management system.

Specialist Services

Fugro EMU can provide bespoke fluorescent sediments and supporting analysis for application in tracer studies used for plume tracing, validation of sediment dispersion characteristics and dredge spoil monitoring. Tracers can be provided with varying colour and sediment size properties to enable concurrent studies of different sediment types.

¹ - a UKAS accredited testing laboratory No. 1272

Fugro EMU Limited

Head Office, 1 Mill Court
The Sawmills, Durley
Southampton, SO32 2EJ
Telephone : +44 (0)1489 860 050
Email : contact@fugroemu.com